



DIRECTIONS 2045

LONG RANGE TRANSPORTATION PLAN

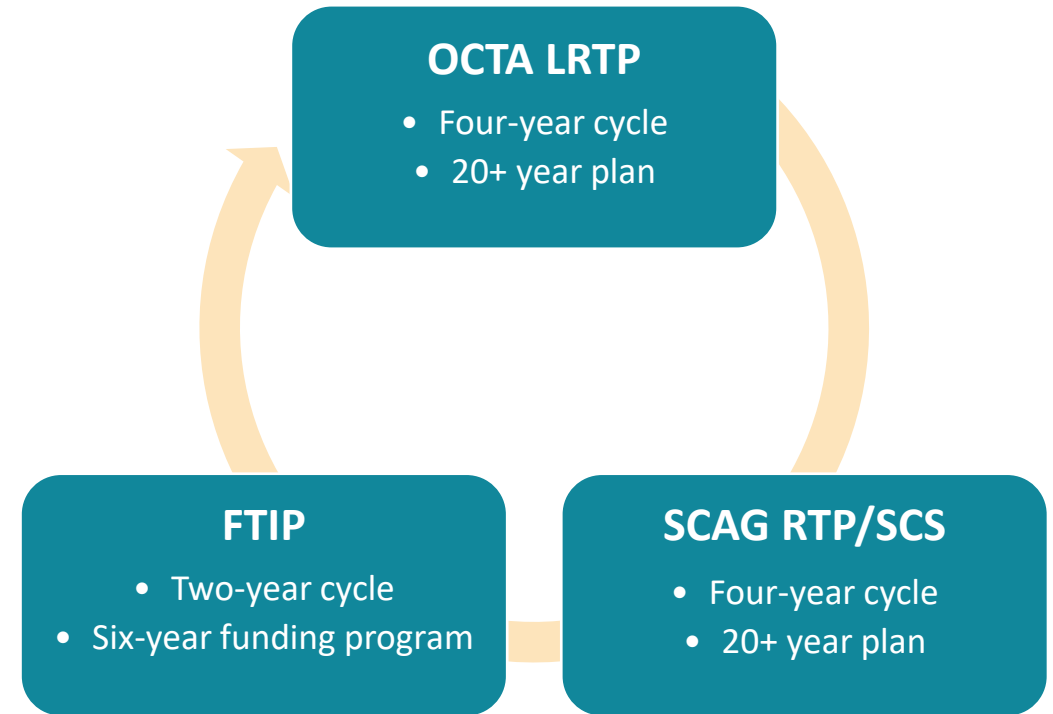
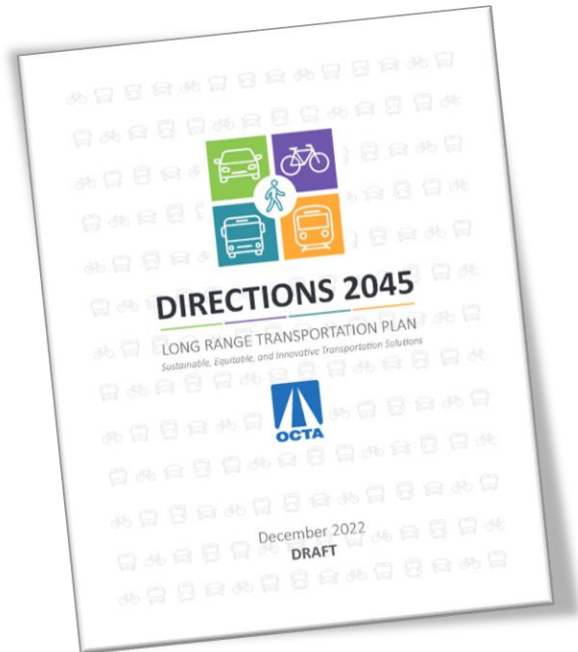
Long-Range Transportation Plan Draft Overview

Sustainable, equitable, and innovative transportation solutions.



Long-Range Transportation Plan

- OCTA's LRTP serves to:
 - Evaluate current plans and commitments
 - Identify new initiatives and priorities
 - Define projects in the RTP



Directions 2045: Goals



Deliver on Commitments



Improve System Performance



Expand System Choices



Support Sustainability

Delivering on Commitments

Freeways

- Deliver 17 freeway projects
- Continue annual endowment deposits

Streets and Roads

- Return 18 percent to local agencies for transportation needs
- Provide annual grants to improve streets
- Fund traffic signal coordination

Transit

- Operate Metrolink and fund station improvements
- Implement and operate OC Streetcar
- Offer enhanced mobility options for seniors and persons with disabilities
- Support local transit circulators
- Improve priority transit stops

Environmental Cleanup

- Provide grants for water cleanup



ENVIRONMENTAL



A total of 5% of OC Go Freeway Program funds is allocated to the Freeway Environmental Mitigation Program



A total of 2% of the overall OC Go Program funds is allocated to the Environmental Cleanup Program

L RTP: Paths to Success



DIRECTIONS 2045

LONG RANGE TRANSPORTATION PLAN

Sustainable, equitable, and innovative transportation solutions.



1. Extend or modify programs funded by Measure M2 (M2)



2. Expand transit services



3. Enhance active transportation



4. Explore mobility integration



5. Eliminate freeway chokepoints



6. Embrace technology



7. Elevate maintenance and resilience priorities

Performance Summary: IMPROVE SYSTEM PERFORMANCE

2045 No Build

Vs.

2045 Preferred Plan

More reliable travel time

Auto: 14 Minutes

Transit: 63 Minutes

Travel Time

↓ 0-4%

Auto: 14 Minutes

Transit: 60 Minutes

Freeway: 40 MPH

Arterial: 25 MPH

Peak Period Speed

↑ 5-8%

Freeway: 42 MPH

Arterial: 27 MPH

Spend less time in traffic

454,000 Vehicle Hours

Delay ↓ 30%

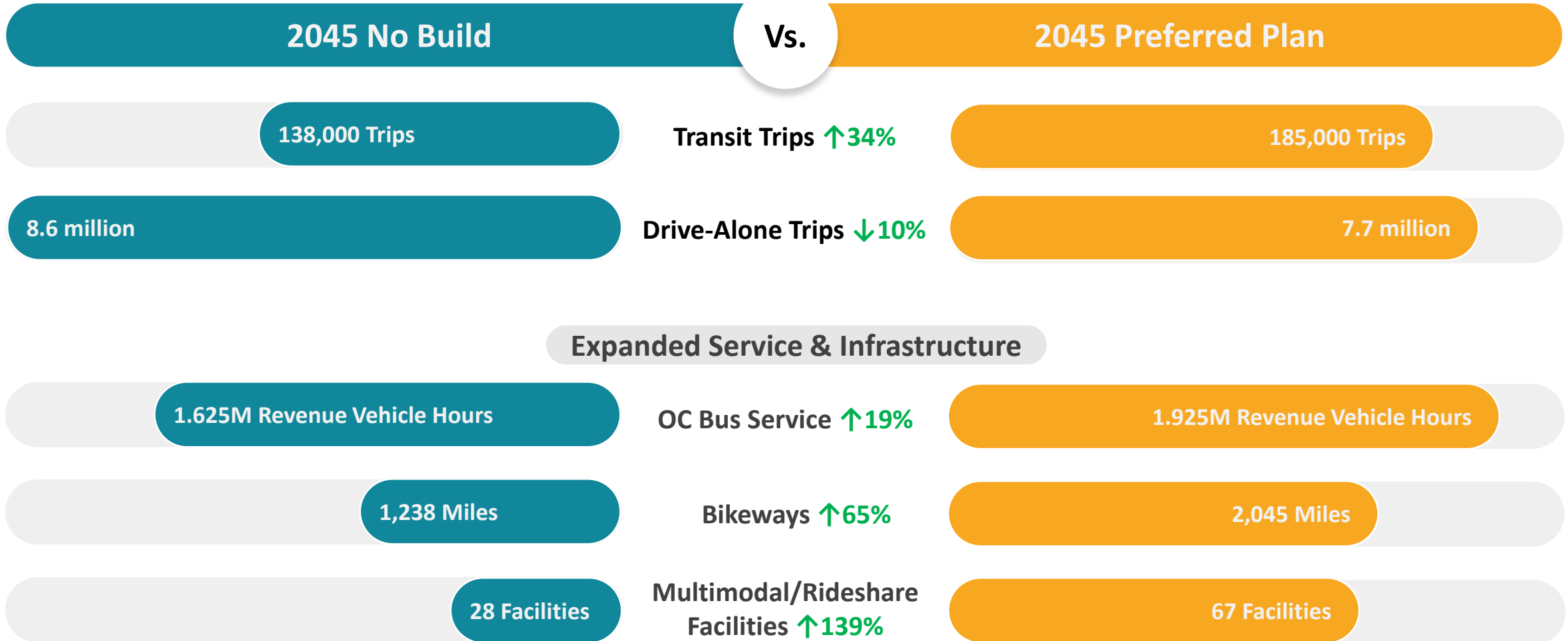
319,000 Vehicle hours

18%

% of Travel Time in
Congestion ↓ 22%

14%

Performance Summary: EXPAND SYSTEM CHOICES



Performance Summary: SUPPORT SUSTAINABILITY

2045 No Build

Vs.

2045 Preferred Plan

Reduced emissions...

81.9M Miles

Daily Vehicle Miles Traveled (VMT) $\uparrow <1\%$

82.1M Miles

23.2 Miles

VMT per Capita 0%

23.2 Miles

20,750 Tons

Greenhouse Gas Emissions $\downarrow 3\%$

20,200 Tons

Improved sustainability and safety...

78 (Good)

Arterial Pavement Condition (PCI) $\uparrow 12\%$

86 (Very Good)

Short-Term Action Plan

Orange County Planning Activities	
Coordination with Local Partner Agencies	Signal Synchronization Strategies
Diversity, Equity, and Inclusion	Transportation Demand Management
Long-Term Transportation Funding Strategy	Mobility Hubs
Corridor Studies and Improvements	Active Transportation Investments
OC Transit Vision Update	Complete Streets
Transit Support Services	Sustainable Transportation Strategies
OC Metrolink Vision	Electric Vehicle Charging Infrastructure
Coastal Infrastructure Study	Joint Development Studies
Managed Lane Studies	Asset Management
Future of the Toll Roads	Adaptation Planning
Freeway Chokepoints	Traffic Model Update

Short-Term Action Plan (continued)

Regional Planning Activities
Coordination with Regional Partner Agencies
Trade Corridors/Goods Movement
2024 RTP/SCS
2028 Olympics
LA Metro Countywide ExpressLanes Strategic Plan
San Diego's I-5 HOT Lane Project
West Santa Ana Branch/ Pacific Electric Right-of-Way
Gold Line Eastern Extension – Phase 2

Emerging Issues
Monitor Technology
Connected Infrastructure Needs Assessment
State and Federal Regulation
State and Federal Funding

Transportation Outreach and Education
Active Transportation Safety
Transit Use and Trip Planning
Diversity, Equity, and Inclusion

RTP/SCS – Regional Transportation Plan/ Sustainable Community Strategies
 LA Metro – Los Angeles Metropolitan Transportation Authority
 I-5 – Interstate 5
 HOT – High-occupancy toll

Public and Stakeholder Engagement

- Draft LRTP posted to OCTA website
- Community-based organizations
- OCTA Advisory Committees
- Telephone Town Hall Jan. 19
- Public webinar Jan. 24
- Community events
- Telephone helpline
- Multilingual online survey, digital media, and print/radio ads



Next Steps

Winter 2023

- Conclude public review period
- Review feedback
- Prepare Final Draft LRTP & Outreach Report

Spring 2023

- Finalize LRTP & Outreach Report

Stay Connected

- www.octa.net/LRTP
- Online Survey: LRTP-Survey.com
- Helpline: (800) 501-9266

Marissa Espino

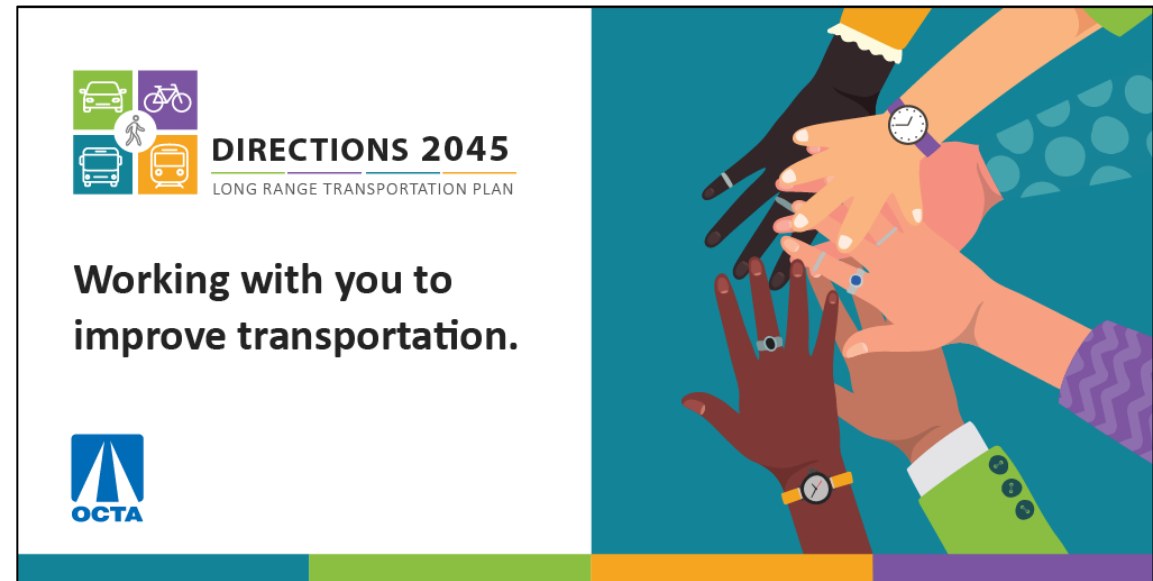
Principal Community Relations Specialist

Mespino@octa.net

Greg Nord

LRTP Project Manager

Gnord@octa.net



slido



**Join at slido.com
#LRTP**

ⓘ Start presenting to display the joining instructions on this slide.

slido



Improving the efficiency and safety of roads and freeways is becoming more important as an alternative to major widening projects as state regulations and limited land availability are making it more difficult to add new lanes.

ⓘ Start presenting to display the poll results on this slide.

slido



Orange County's many diverse communities require a wide variety of transportation options to address local mobility needs.

ⓘ Start presenting to display the poll results on this slide.

slido



It is important to continue OC Go funded programs beyond 2041 to maintain infrastructure, signal synchronization, transit accessibility, senior mobility, Metrolink service, and other programs.

ⓘ Start presenting to display the poll results on this slide.



THANK YOU

DIRECTIONS 2045 LONG RANGE TRANSPORTATION PLAN

Backup Slides

Achieving the Goals



Improve System Performance

30% fewer Hours in Traffic



Expand System Choices

10% fewer Drive Alone Trips



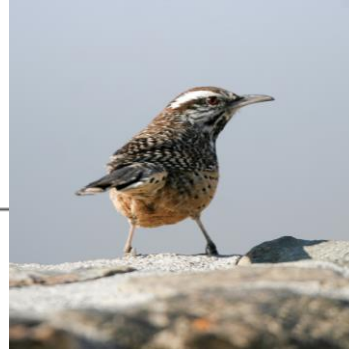
Support Sustainability

0% change in Vehicle Miles Traveled

**Jobs & Key Destinations
Accessible within 30 minutes**

+ 282,000 on Avg for OC

+ 323,000 on Avg for Communities of Concern



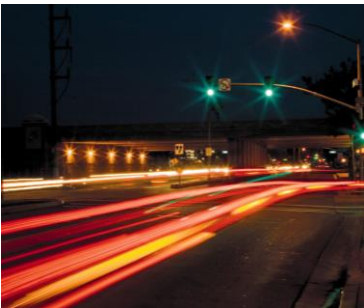
1. Extend or Modify M2 Programs

Purpose:

- Invest funds in popular and effective programs beyond the sunset of M2

How:

- Signal synchronization
- Roadway improvements
- Community circulators
- Metrolink service
- Transit accessibility
- Senior mobility
- Environmental mitigation





2. Expand Transit Services

Purpose:

- Provide more service tailored to local needs

How:

- Rapid bus (BRAVO!)
- Microtransit (OC Flex/SC Rides)
- High-capacity transit
- Reduced or free transit fares

SC Rides – City of San Clemente partnership with Lyft and Butterfli to provide subsidized on-demand rides to and from select areas throughout San Clemente.



3. Enhance Active Transportation

Purpose:

- Provide safe and attractive active transportation facilities through coordination with local jurisdictions

How:

- Coordinate regional routes
- Support local routes
- Reallocation of excess roadway space



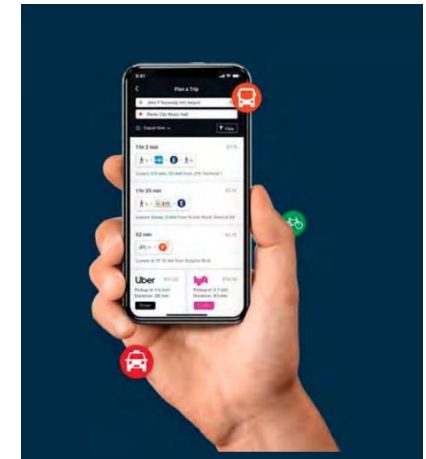
4. Explore Mobility Integration

Purpose:

- Improve access to mobility options and reduce first-/last-mile challenges

How:

- Mobility hubs
- Mobility as a service
- Micromobility





5. Eliminate Freeway Chokepoints

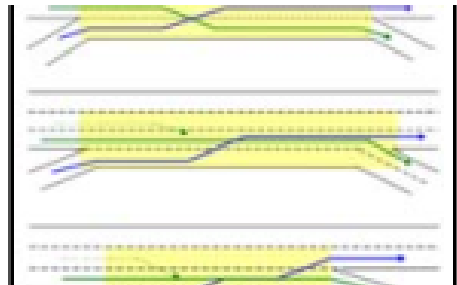
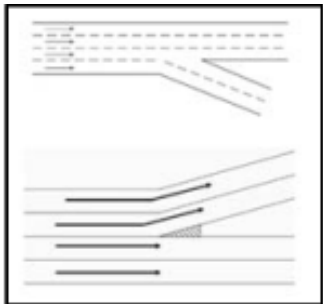
Purpose:

- Enhance safety and reduce driving delays within existing right-of-way



How:

- Auxiliary lanes
- Braided ramps
- Address lane drops
- System management





6. Embrace Technology

Purpose:

- Leverage technology and services to provide more options and improve efficiency

How:

- Electric vehicle charging stations
- Remote work/teleservices
- E-bikes/neighborhood electric vehicles
- Connected vehicles/enhanced signal synchronization
- Monitor emerging technology



7. Elevate Maintenance and Resilience Priorities

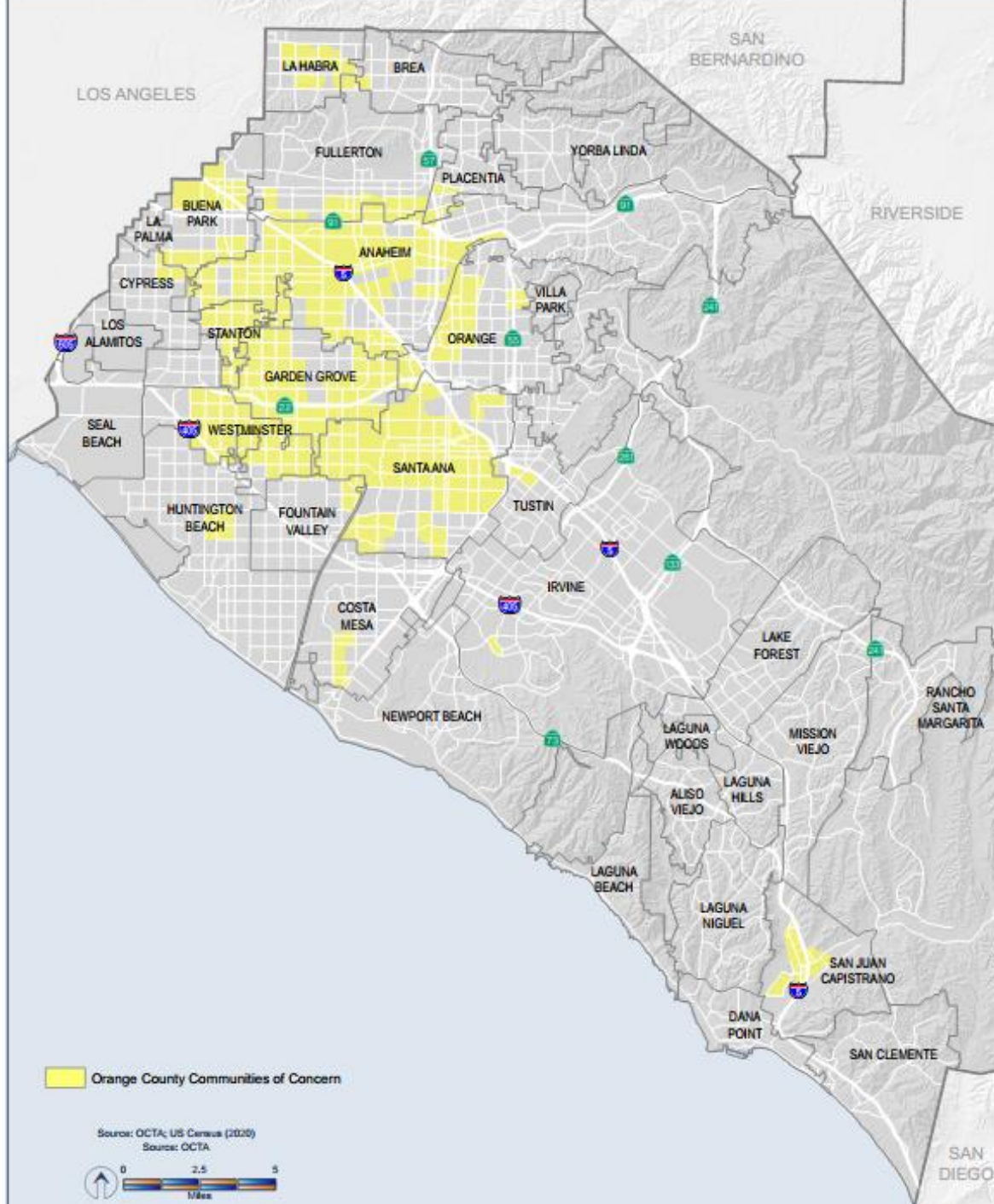
Purpose:

- Preserve and protect transportation investments

How:

- Maintain existing infrastructure
- Assess risks and mitigations
- Electric bus fleet





C:\ProgramData\FCS\BPA\1179_21_25\1179\Proposed\CommofConcern\comm_2021_42714.nxd