

**BIKE  
SMART.  
BIKE  
SAFE.**



**BIKE  
SAFETY**

BIKE SMART.  
BIKE SAFE.

# Bike Safety Awareness Campaign



# BIKE SAFETY

BIKE SMART  
BIKE SAFE.



## Goals

- Highlight the importance of safety
- Educate and engage the public
- Create and foster a safer community
- Develop partnerships



# BIKE SAFETY

BIKE SMART  
BIKE SAFE.

## BIKE SMART. BIKE SAFE.



Check your bike safety IQ and win safety gear!  
[BeBikeSmart.com](http://BeBikeSmart.com)



**DID YOU KNOW?**  
A helmet is the single most effective way to prevent a head injury resulting from a bicycle crash.

Motorists are considered vehicle operators. They are required to obey the same rules of the road as other vehicle operators.

When cycling in the street, cyclists must ride in the same direction as traffic.



**DID YOU KNOW?**  
Motorists are considered vehicle operators. They are required to obey the same rules of the road as other vehicle operators.

When cycling in the street, cyclists must ride in the same direction as traffic.

Motorists should increase their visibility to drivers by wearing fluorescent or brightly colored clothing during the day, dawns, and dusk.

## BIKE SMART. BIKE SAFE.



Check your bike safety IQ and win safety gear!  
[BeBikeSmart.com](http://BeBikeSmart.com)



**DID YOU KNOW?**  
Cyclists are at an elevated risk compared to other road users when it comes to...

The use of proper bike equipment is essential for the protection of your health and the safety of all other road users.

A helmet is the single most effective way to prevent a head injury resulting from a bicycle crash.

## MONTE SU BICICLETA DE MANERA INTELIGENTE. MONTE SU BICICLETA CON SEGURIDAD.



¡Verifique su coeficiente intelectual sobre la seguridad para ciclistas y gane equipo de seguridad!

[BeBikeSmart.com](http://BeBikeSmart.com)



**¿SABÍA USTED?**  
Un casco es la manera más efectiva de prevenir una lesión en la cabeza como consecuencia de un accidente en bicicleta.

Los ciclistas son considerados operadores de vehículos. Deben obedecer y cumplir las mismas reglas de tránsito que otros operadores de vehículos.

Al ser bicicleta en la calle, los ciclistas deben viajar en la misma dirección que el tráfico.



**¿SABÍA USTED?**  
Los ciclistas son considerados operadores de vehículos. Deben obedecer y cumplir las mismas reglas de tránsito que otros operadores de vehículos.

Al ser bicicleta en la calle, los ciclistas deben viajar en la misma dirección que el tráfico.

Los ciclistas deben aumentar su visibilidad a los conductores cuando viajan fluorescente o de colores brillantes durante el día, al amanecer y al atardecer.

## MONTE SU BICICLETA DE MANERA INTELIGENTE. MONTE SU BICICLETA CON SEGURIDAD.



¡Verifique su coeficiente intelectual sobre la seguridad para ciclistas y gane equipo de seguridad!

[BeBikeSmart.com](http://BeBikeSmart.com)



**¿SABÍA USTED?**  
Los ciclistas son considerados operadores de vehículos. Deben obedecer y cumplir las mismas reglas de tránsito que otros operadores de vehículos.

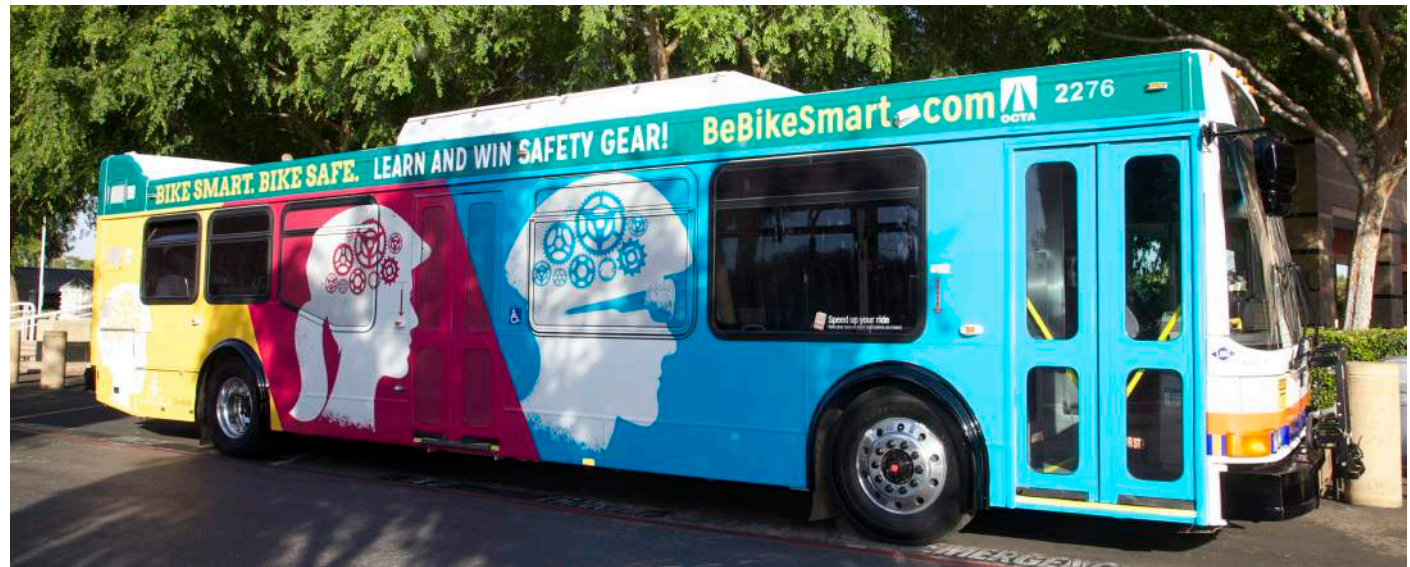
Al ser bicicleta en la calle, los ciclistas deben viajar en la misma dirección que el tráfico.

Los ciclistas deben aumentar su visibilidad a los conductores cuando viajan fluorescente o de colores brillantes durante el día, al amanecer y al atardecer.



# BIKE SAFETY

BIKE SMART  
BIKE SAFE.

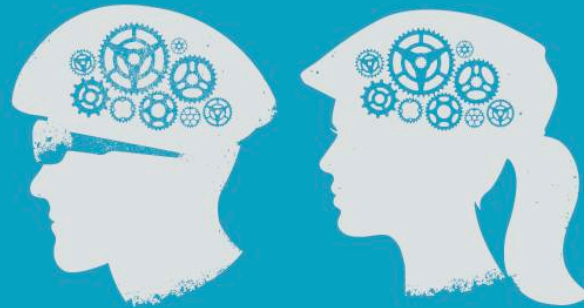


# BIKE SAFETY

BIKE SMART  
BIKE SAFE.

## BICYCLIST SAFETY TIPS

FOR ADULTS



### IT'S A DAY FOR A RIDE!

Before you roll, take a few minutes to review these tips to help make your journey safe and enjoyable.



#### Know the law.\*

Understand and obey laws governing traffic safety, safe riding procedures, bike equipment, and more.



#### Wear a helmet.

Head injuries are the most serious type of injury and the most common cause of death for bicyclists. While helmets are required only for those under 18, everyone needs protection. Learn how to select and fit a helmet at [octa.net/bikesafety](http://octa.net/bikesafety)



#### Be visible.

Wear bright or reflective clothes. Equip your bike with a headlight and rear reflector.



#### Learn hand signals.

Hand signals tell motorists when you want to turn left, right, slow or stop. They're easy to learn and are required by law. Find out how at [octa.net/bikesafety](http://octa.net/bikesafety)



#### Ride with traffic.

Failure to do this is the biggest cause of bicycle injury in Orange County. Go with the traffic flow. It's the best way to share the road with motorists. If you are traveling slower than the speed of traffic, you must use the bike lane if one is available.



#### Pay attention.

Don't ride distracted. Keep the music and phone for another time. Avoid riding if you are tired and don't ride your bike if you've been drinking alcohol.



#### Use caution when riding near parked cars.

You can be injured when a car door opens.



#### Behave predictably.

Don't weave between parked cars. Follow lane and highway markings.



#### Maintain your bike.

Always check brakes, chains and tires before you ride.



#### Take a bike class.

Improve your skills and safety awareness with a local bike class.

\*For more information about laws concerning cycling, please view this information from the California Department of Motor Vehicles (DMV):  
California DMV Driver Handbook: [http://apps.dmv.ca.gov/pubs/hdbk/driver\\_handbook\\_toc.htm](http://apps.dmv.ca.gov/pubs/hdbk/driver_handbook_toc.htm)  
California DMV California Vehicle Code 2014: <http://www.dmv.ca.gov/pubs/vctop/vc/vc.htm>  
California DMV "Sharing the Road: Fast Facts": [http://www.dmv.ca.gov/pubs/brochures/fast\\_facts/ffd137.htm](http://www.dmv.ca.gov/pubs/brochures/fast_facts/ffd137.htm)



# BIKE SAFETY

BIKE SMART  
BIKE SAFE.



Orange County  
Transportation Authority

[High Contrast](#) [Construction](#) [Funding](#) [Blog](#) [Contact Us](#)



Search



Bus Transit



Rail



Freeways & Streets



Express Lanes



Share the Ride / Bike



Plans & Programs



Measure M



About OCTA



## Share the Ride/Bike

OVERVIEW

COMMUTERS

EMPLOYERS

NEWS

BIKE

[Bike Promotions](#)

[Bikeways Planning](#)

[Riding in Orange County](#)

[Bikes on Buses](#)

[Bikes on Trains](#)

[OC Bikeways Map](#)

[Bike Safety](#)

[Sharing the Road](#)

[Cycling Resources](#)

[BikeShare](#)

[Newsletter](#)

VANPOOL

CALENDAR

TRANSIT MOBILE APPS

GET CONNECTED

## Kids Helmets

OVERVIEW

FOR KIDS/YOUTH

FOR ADULTS

FOR MOTORISTS

EVENTS & WORKSHOPS



### Protect Your Head with a Helmet

Can you guess which sport sends most kids between ages 5 and 14 to the emergency room? If you guessed biking, you would be right. According to the National Highway Traffic Safety Administration (NHTSA), more children in that age group wind up in the hospital for bicycle-related injuries than with any other sport, many of them with head injuries. Don't be one of them!

#### Wear A Helmet: It's the Law

Wear a helmet every time you ride. That's the law in California if you're under 18. Your helmet is your most important piece of safety equipment. Even if you're an awesome bike rider, accidents can happen. Be prepared and be safe.

#### Get A Good Fit

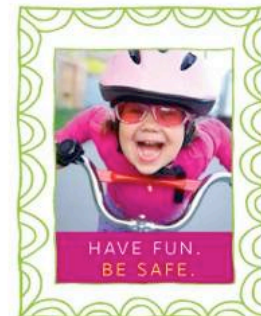
Helmets are so important that the U.S. government has created safety standards for them. Use a helmet that meets the standards of the American National Standards Institute (ANSI) or the SNELL Standards for Protective Headgear.

Make sure your helmet fits well and never wear a hat underneath. Keep the helmet level and covering your forehead and keep those chin straps fastened.

This is important stuff, so ask you parents or someone from the bike shop for help.

Here are some tips for fitting your helmet:

1. Get the correct size.



# BIKE SAFETY

BIKE SMART  
BIKE SAFE.

View video here:

<http://youtu.be/ABFI3E4paPE>





# BIKE SAFETY

BIKE SMART  
BIKE SAFE.



**YOUTH**  
BIKE SAFETY



**ADULT**  
BIKE SAFETY



**DRIVER**  
BIKE SAFETY

## CHECK YOUR BIKE SAFETY IQ!

*How Bike Smart are you?*

**WIN** *Check your Bike Safety IQ and be entered to win  
a helmet, jersey or road bike!*



Sweepstakes Rules

# BIKE SAFETY

BIKE SMART  
BIKE SAFE.

## MAY IS BIKE MONTH

BIKE SMART. BIKE SAFE.



### QUIZ YOUR BIKE SAFETY SMARTS AND PLEDGE TO BIKE TODAY

Receive a \$25 coupon from JAX Bicycle Center and win great safety gear. Go to

[octa.net/bikemonth](http://octa.net/bikemonth)

#### GET ROLLING AND JOIN US FOR THESE EXCITING EVENTS!

<b>BIKE FESTIVAL</b> APRIL 27 Pier Plaza, Huntington Beach 9:00 am - 1:00 pm	<b>ANGELS GAME DAY RIDE</b> MAY 4 Angel Stadium, Anaheim 11:00 am	<b>BIKE RALLY &amp; BLESSING OF THE BIKES</b> MAY 7 Santa Ana Metrolink Station to Santa Ana City Hall 7:00 am - 9:00 am	<b>BIKE RALLY</b> MAY 15 Orange Metrolink Station to OCTA 7:30 am - 8:45 am	<b>RIDE OF SILENCE</b> MAY 21 Irvine City Hall 6:30 pm - 9:00 pm	<b>BIKE SAFETY CAMP</b> MAY 28 Fashion Park, Irvine 9:00 am - 2:00 pm
---	--	---	--	---	--



## MAY IS BIKE MONTH

BIKE SMART. BIKE SAFE.



### QUIZ YOUR BIKE SAFETY SMARTS AND PLEDGE TO BIKE TODAY

Receive a \$25 coupon from JAX Bicycle Center and win great safety gear. Go to

[octa.net/bikemonth](http://octa.net/bikemonth)

#### GET ROLLING AND JOIN US FOR THESE EXCITING EVENTS!

<b>BIKE FESTIVAL</b> APRIL 27 Pier Plaza, Huntington Beach 9:00 am - 1:00 pm	<b>ANGELS GAME DAY RIDE</b> MAY 4 Angel Stadium, Anaheim 11:00 am	<b>BIKE RALLY &amp; BLESSING OF THE BIKES</b> MAY 7 Santa Ana Metrolink Station to Santa Ana City Hall 7:00 am - 9:00 am	<b>BIKE RALLY</b> MAY 15 Orange Metrolink Station to OCTA 7:30 am - 8:45 am	<b>RIDE OF SILENCE</b> MAY 21 Irvine City Hall 6:30 pm - 9:00 pm	<b>BIKE SAFETY CAMP</b> MAY 28 Fashion Park, Irvine 9:00 am - 2:00 pm
---	--	---	--	---	--



## MAY IS BIKE MONTH

BIKE SMART. BIKE SAFE.



### QUIZ YOUR BIKE SAFETY SMARTS AND PLEDGE TO BIKE TODAY

Receive a \$25 coupon from JAX Bicycle Center and win great safety gear. Go to

[octa.net/bikemonth](http://octa.net/bikemonth)

#### GET ROLLING AND JOIN US FOR THESE EXCITING EVENTS!

<b>BIKE FESTIVAL</b> APRIL 27 Pier Plaza, Huntington Beach 9:00 am - 1:00 pm	<b>ANGELS GAME DAY RIDE</b> MAY 4 Angel Stadium, Anaheim 11:00 am	<b>BIKE RALLY &amp; BLESSING OF THE BIKES</b> MAY 7 Santa Ana Metrolink Station to Santa Ana City Hall 7:00 am - 9:00 am	<b>BIKE RALLY</b> MAY 15 Orange Metrolink Station to OCTA 7:30 am - 8:45 am	<b>RIDE OF SILENCE</b> MAY 21 Irvine City Hall 6:30 pm - 9:00 pm	<b>BIKE SAFETY CAMP</b> MAY 28 Fashion Park, Irvine 9:00 am - 2:00 pm
---	--	---	--	---	--



# OCTA BIKE FESTIVAL

SUNDAY  
4/27

PIER PLAZA

**BIKESHARE DEDICATION**  
TUESDAY, APRIL 22 | 9:30 am - 11:30 am  
SOCO Parking Structure, Fullerton Transportation Center

**ANGELS GAME DAY RIDE**  
SUNDAY, MAY 4 | 11:00 am  
Angel Stadium, Anaheim

**SANTA ANA BIKE RALLY & BLESSING OF THE BIKES**  
WEDNESDAY, MAY 7 | 7:00 am - 9:00 am  
Santa Ana Metrolink Station to Santa Ana City Hall

**OCTA BIKE RALLY**  
THURSDAY, MAY 15 | 7:30 am - 8:45 am  
Orange Metrolink Station to OCTA Headquarters

**RIDE OF SILENCE**  
WEDNESDAY, MAY 21 | 6:30 pm - 9:00 pm  
Irvine City Hall / San Clemente North Beach



# BIKE SAFETY

BIKE SMART  
BIKE SAFE.



## Results

- 130,000 video impressions on cable TV
- 12,000 video views on YouTube
- 8,880 unique visits to [BeBikeSmart.com](http://BeBikeSmart.com)
- More than 6,000 quizzes answered



**BIKE  
SMART.  
BIKE  
SAFE.**



BIKE SMART. BIKE SAFE.

Check your bike safety IQ and win safety gear!

**BeBikeSmart.com**