

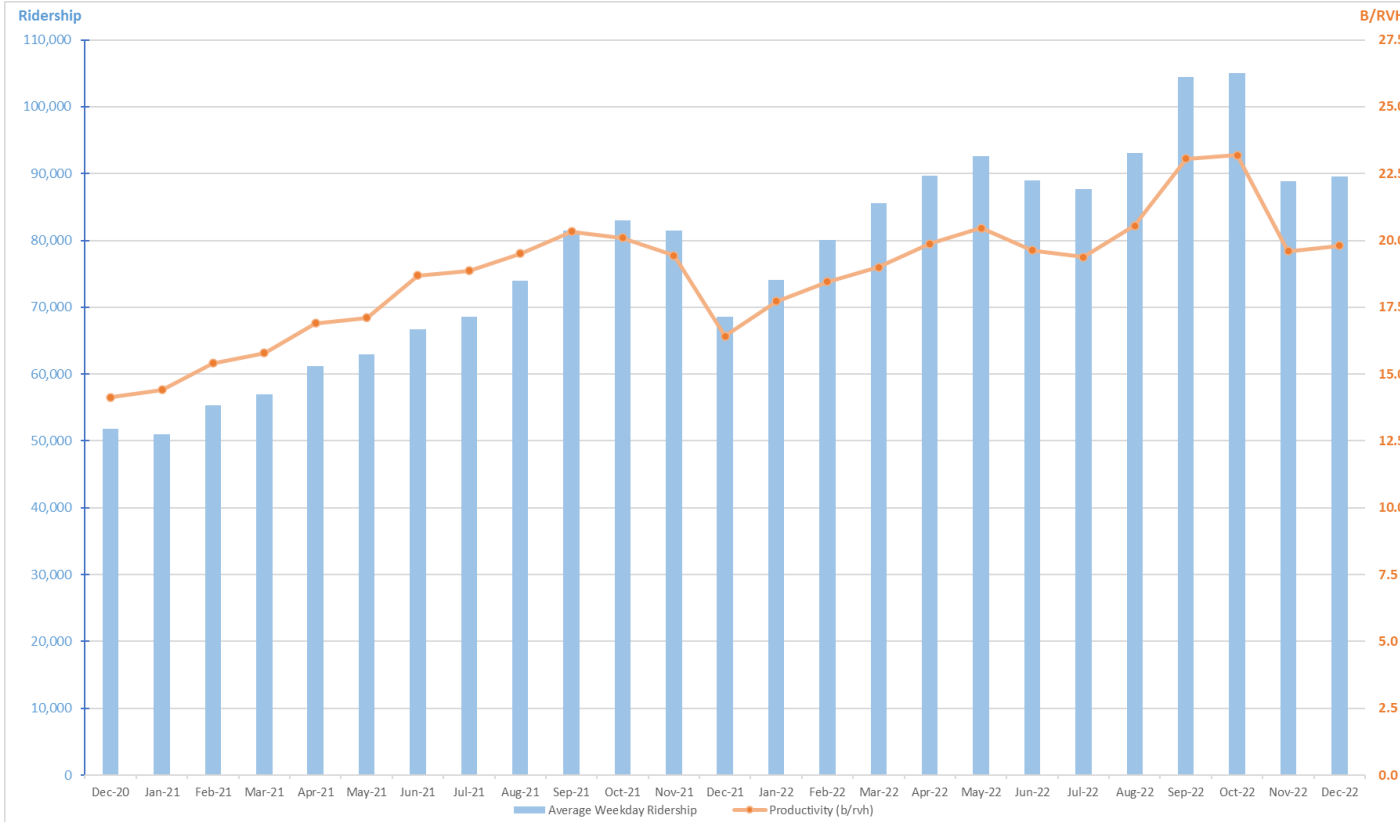


OC Bus Update

- **Ridership**
 - Average weekday boardings and productivity as measured by boardings per revenue vehicle hour (B/RVH)
- **On-Time Performance**
 - Measuring service quality

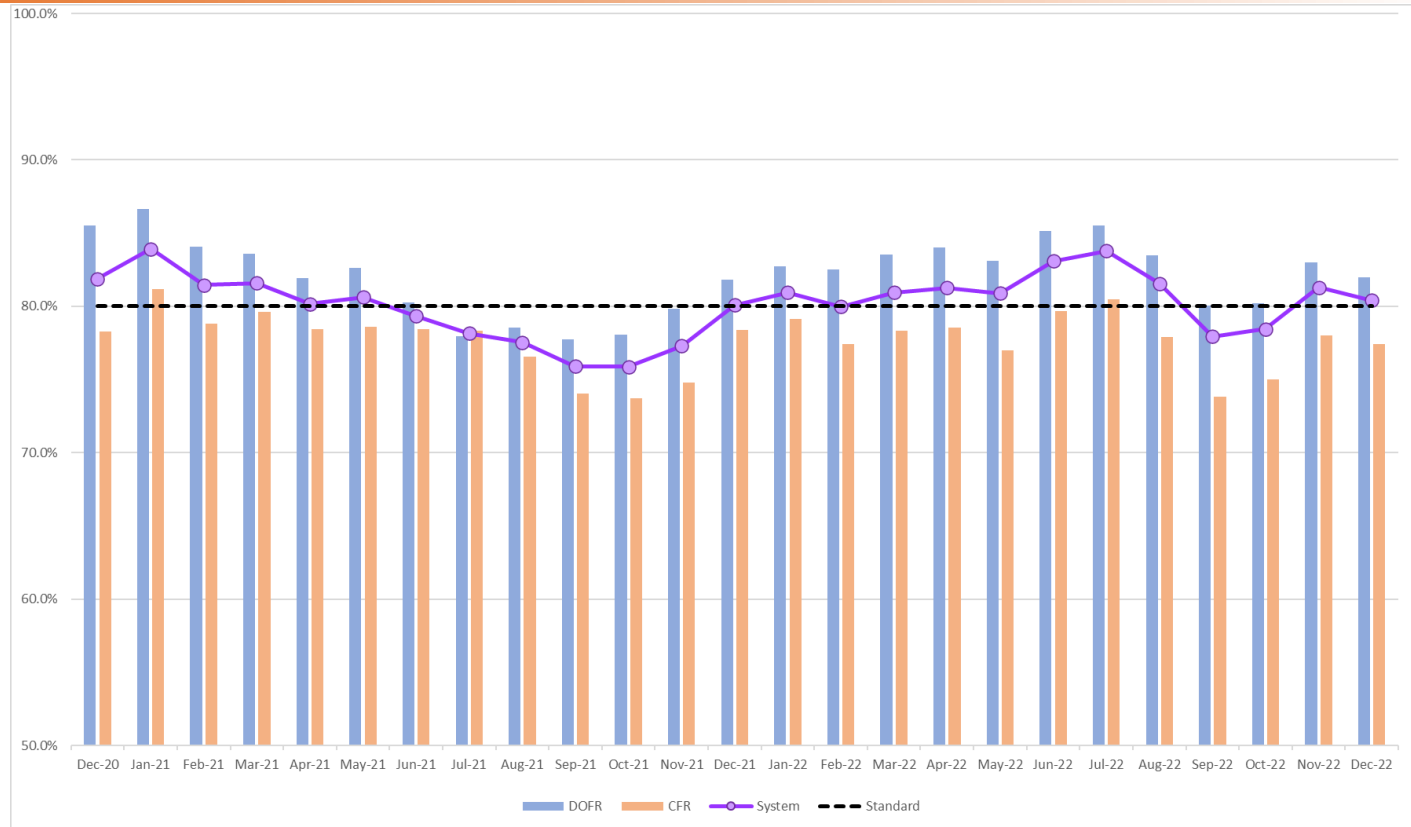
OC BUS RIDERSHIP AND PRODUCTIVITY

(AVERAGE WEEKDAY – LAST 2 YEARS)



OC BUS ON-TIME PERFORMANCE

(AVERAGE WEEKDAY)





NEXT STEPS

- Continue to Track Service Performance
 - Ridership trends
 - On-time performance
- Upcoming Service Changes
 - February 12, 2023